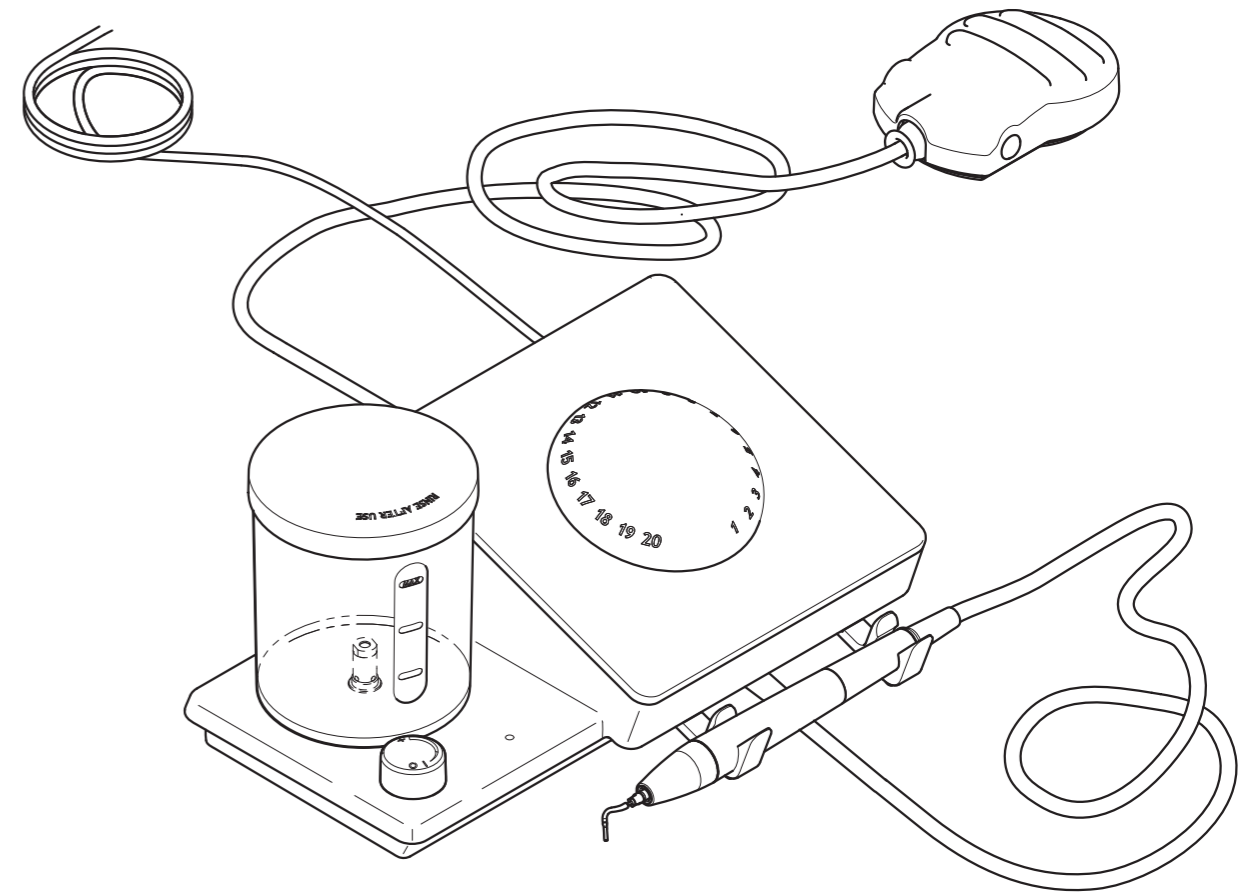


# Quick Start



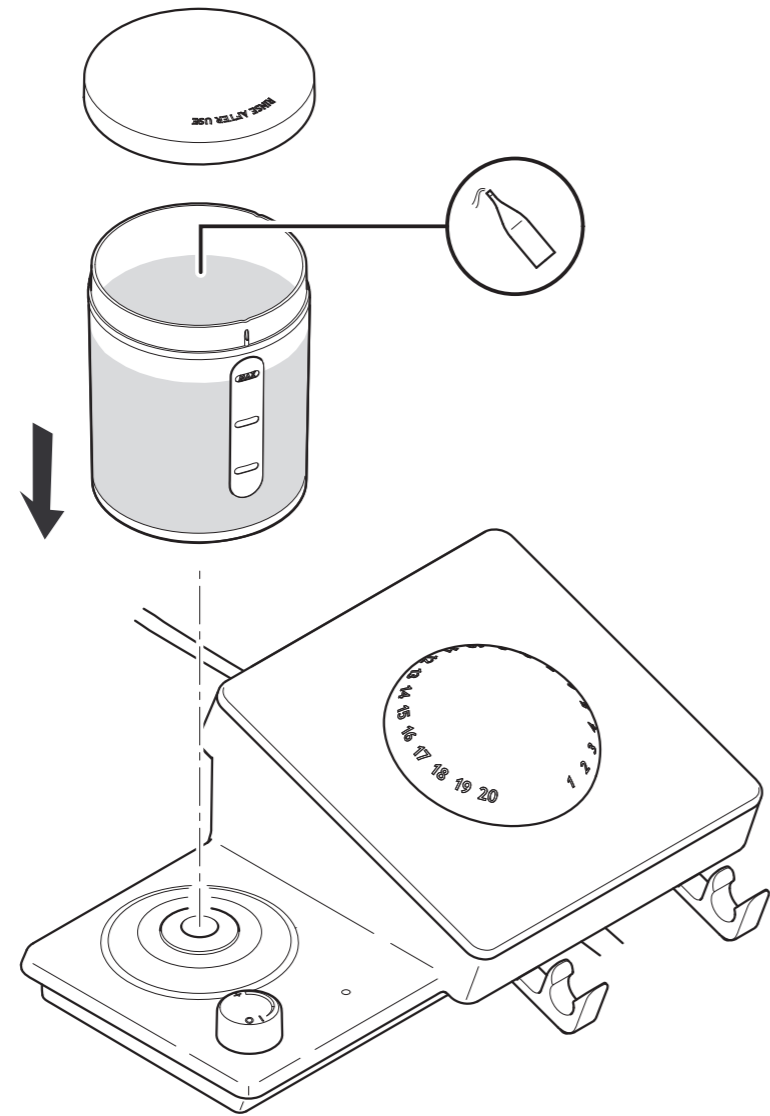
**NEWTRON**  
**P5<sup>XS</sup>**

REF : QUICK START NEWTRON® P5XS • J62100 • V0 • (13) • 02/2013 • NBADZZ010A

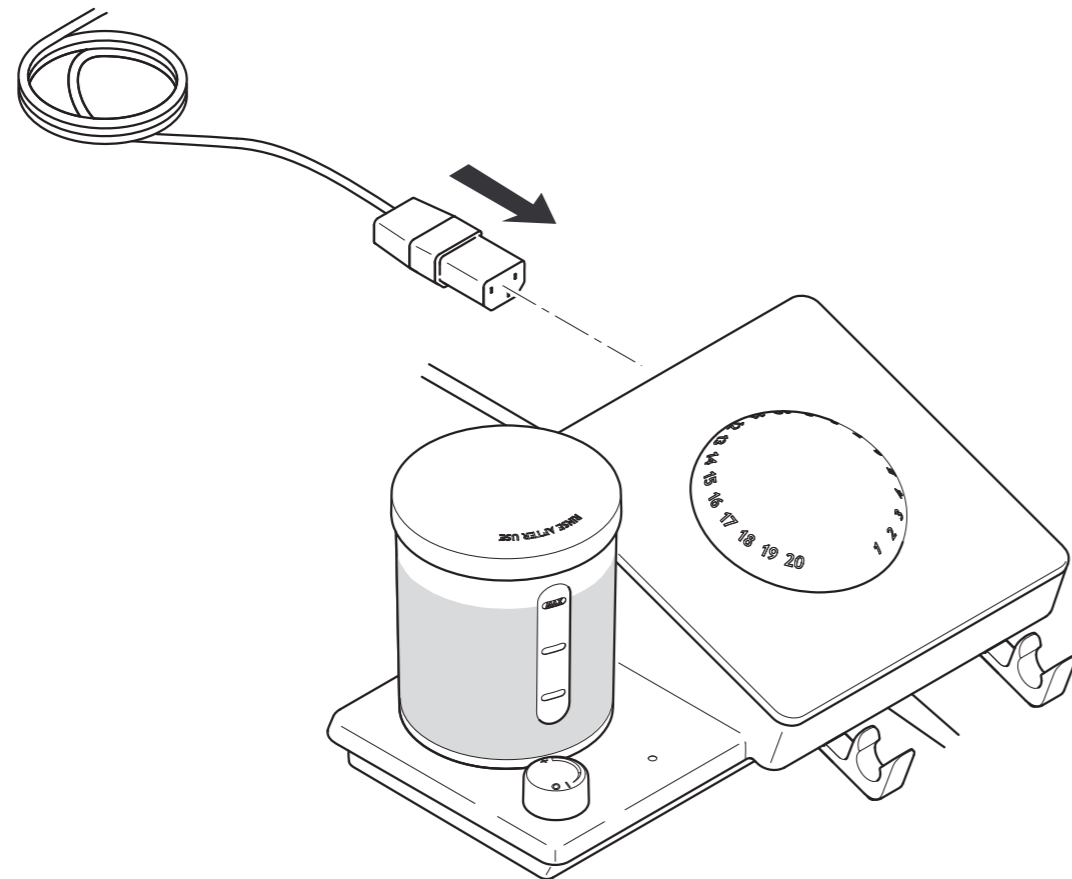
A Company of ACTEON Group • 17 av. Gustave Eiffel • BP 30216 • 33708 MERIGNAC Cedex • France  
Tel. +33 (0)5 56 34 06 07 • Fax. +33 (0)5 56 34 92 92  
E-mail : satelec@acteongroup.com • www.acteongroup.com



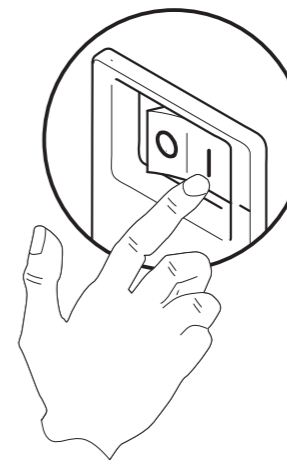
1



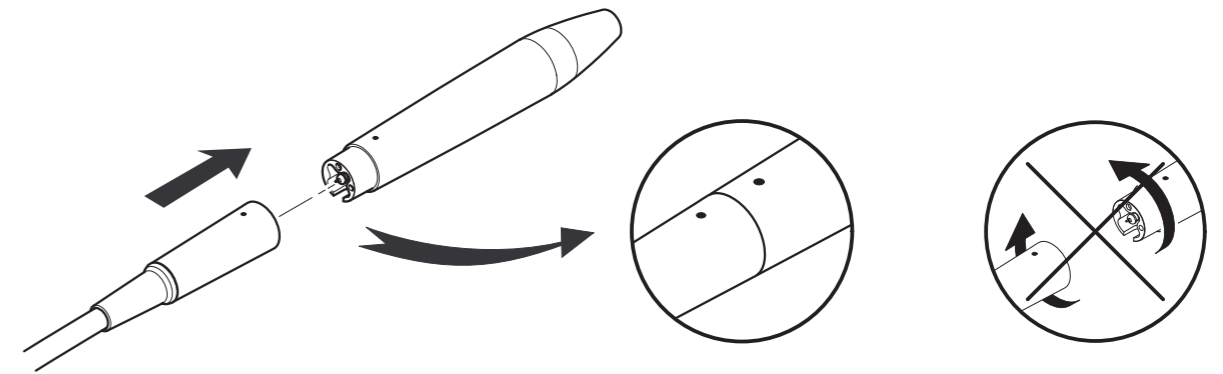
2



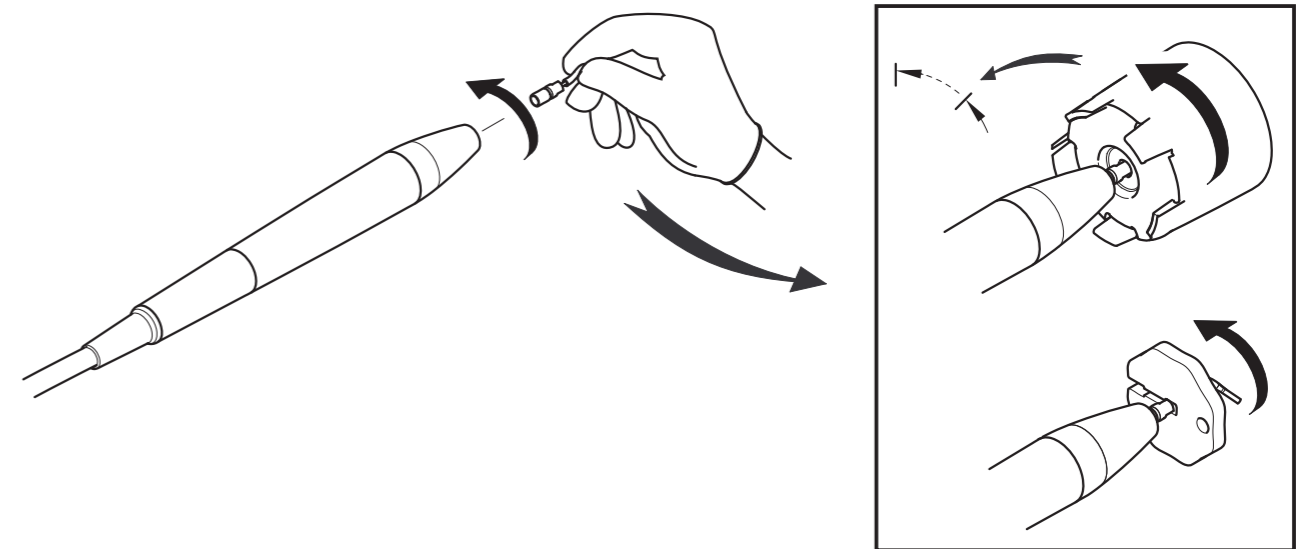
3



4



5



6

