

AIS 3D App

Scanning Model Procedure



1- Plug the Model holder onto TRIUM unit



2- Place Model onto the holder



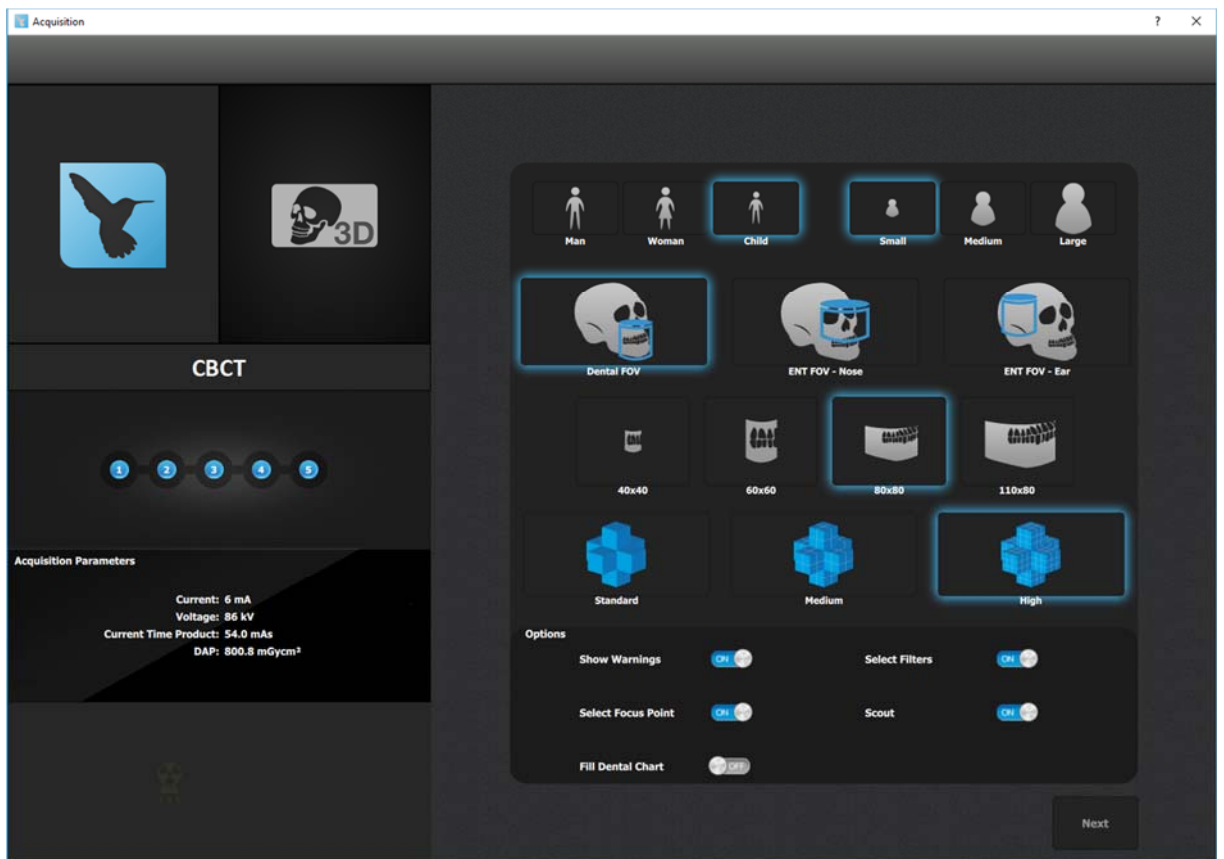
3- Start AIS SW

4- Select your patient

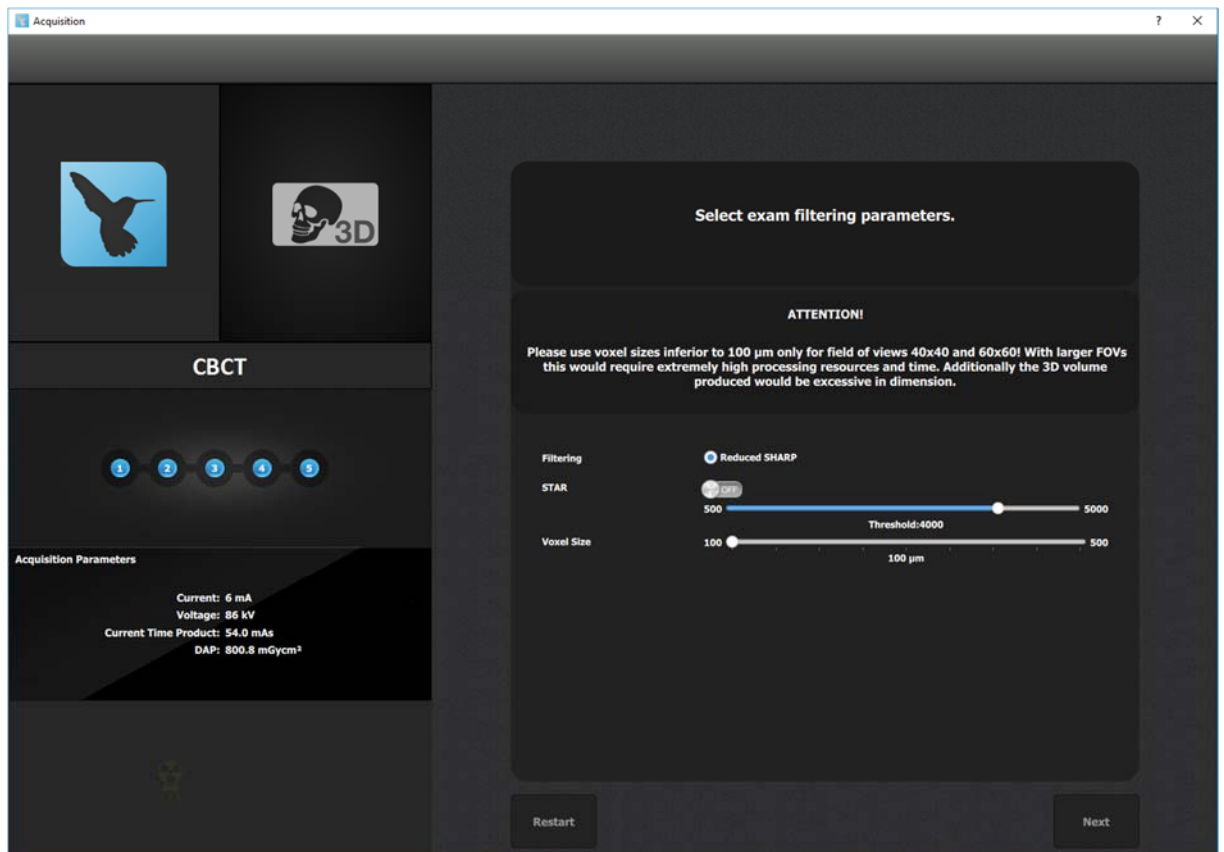
5- Press on 3D Acquisition



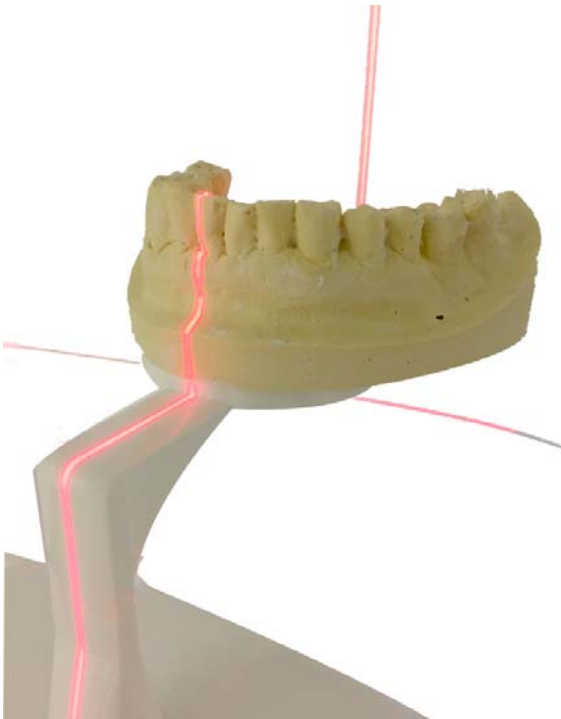
- 6- According the Model size you want to scan select Child small for 8x8 FOV or Medium for 11x8 -High Quality as the picture below.



- 7- Do not turn ON STAR Filter
8- Select 100µm resolution as the picture below

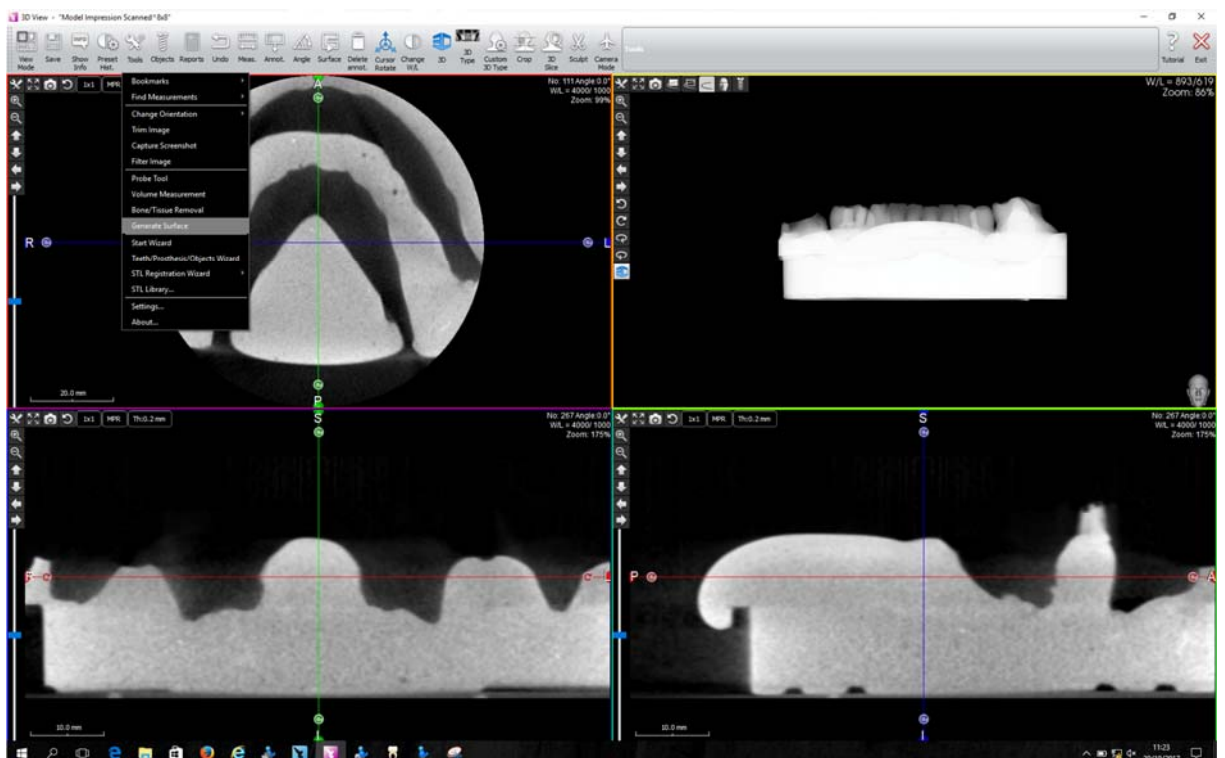


- 9- Adjust the axial laser in order to get the lower part of the model without getting the support.



- 10- Do the acquisition.

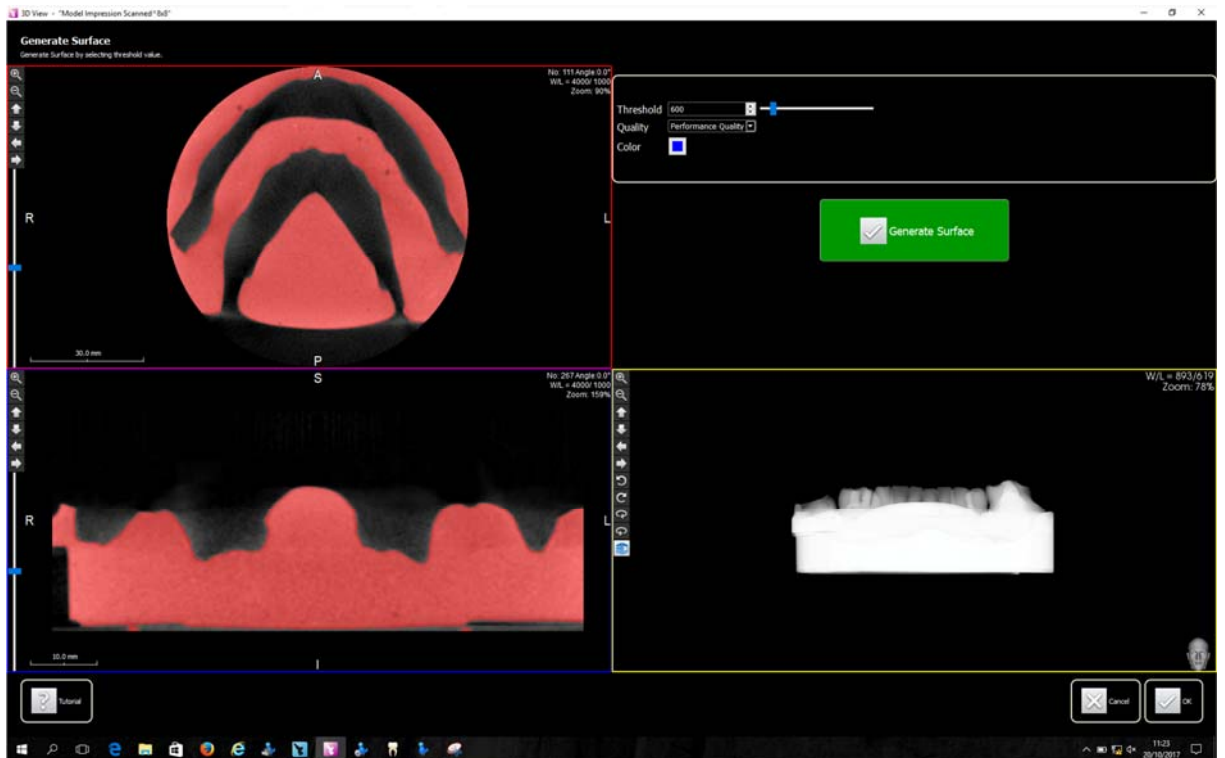
- 11- Open the scan to generate the surface from Tools Generate surface



12- Adjust the threshold according the material scanned :

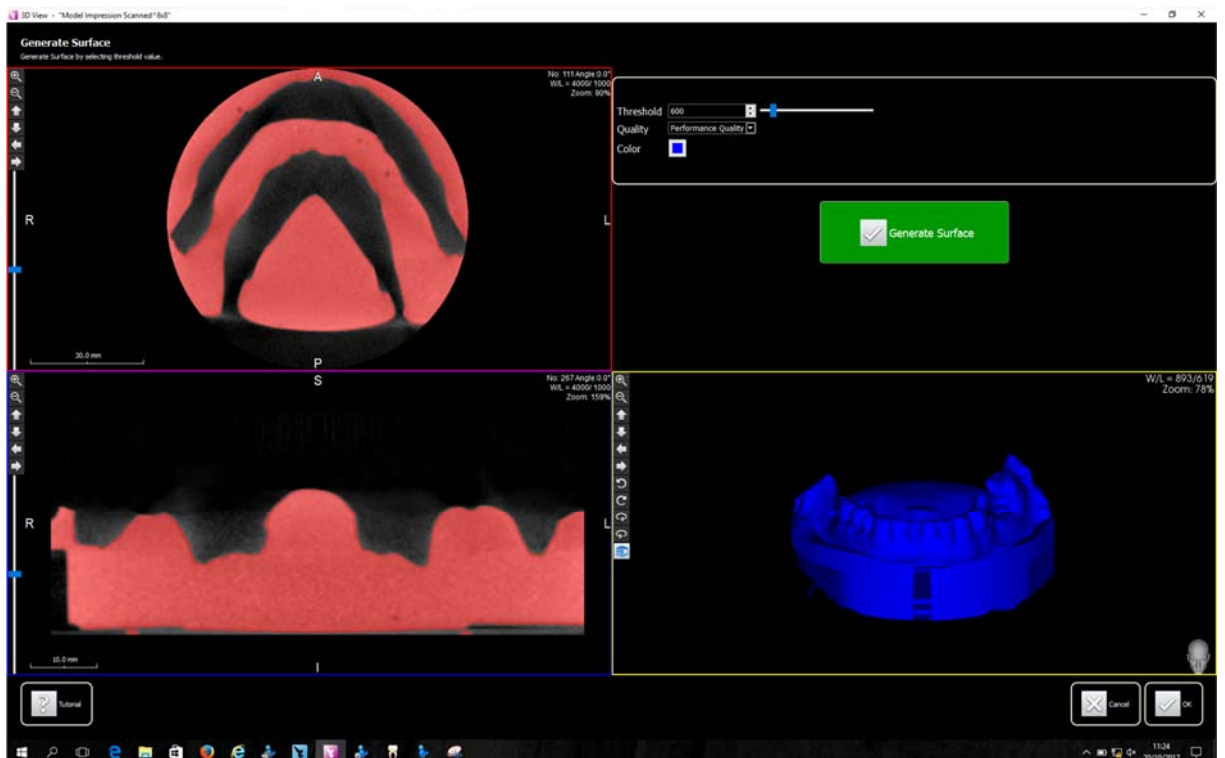
For a plaster cast model, adjust the threshold at à 600HU

For a silicon model, adjust the threshold at -400HU

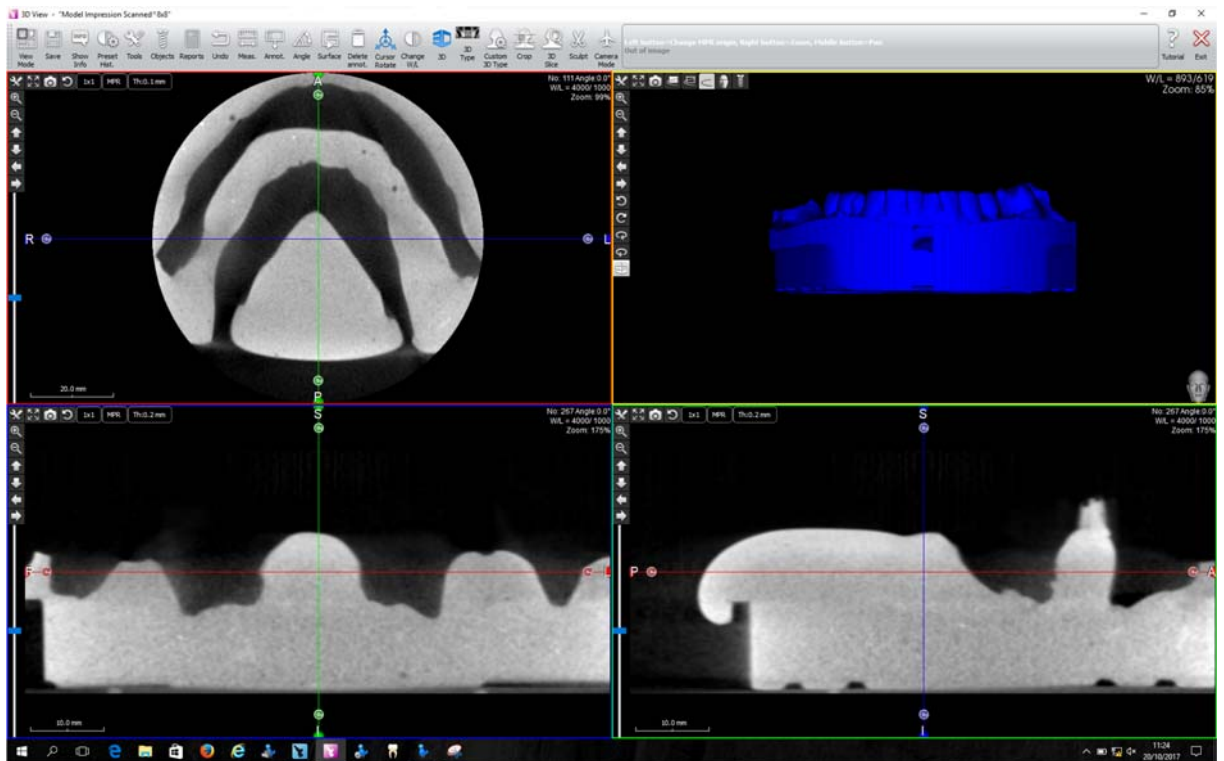


NB : These settings might vary according the impression material used.

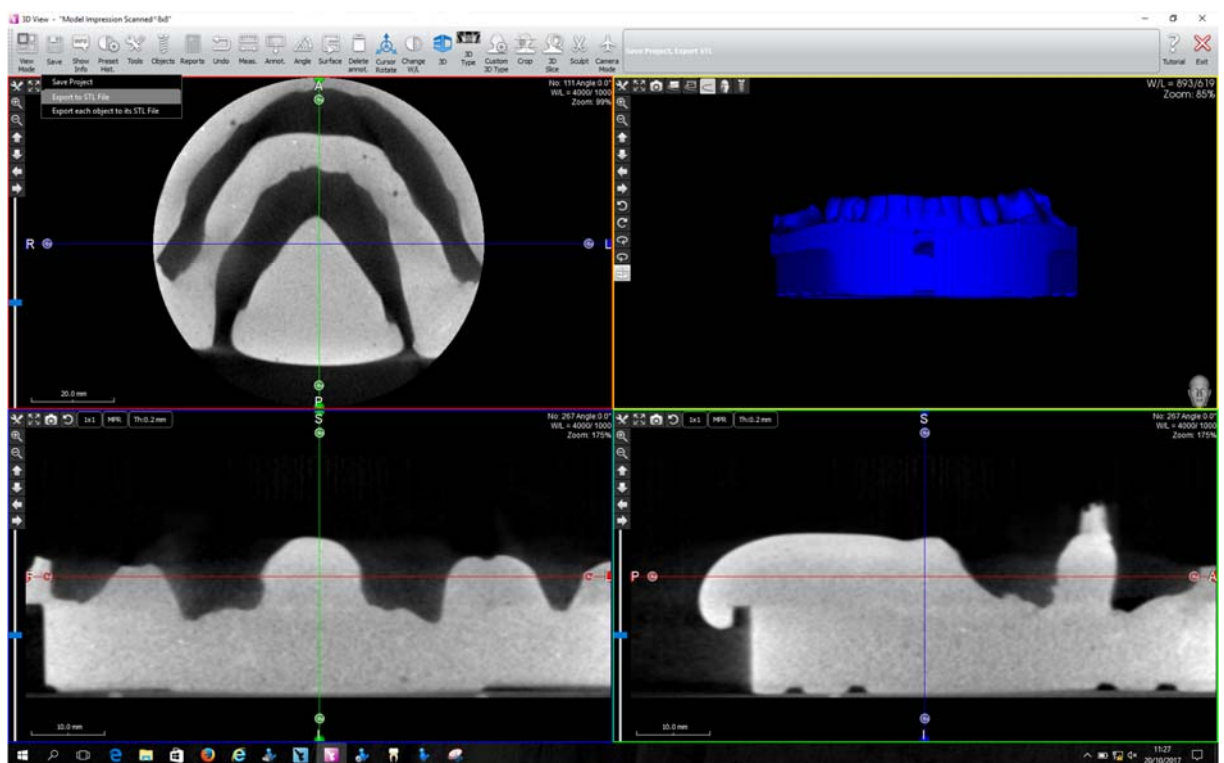
Press on **Generate surface**,



Then press OK if the surface generated is complete otherwise, adjust the threshold and repeat the procedure.



13- Export the STL file generate thanks to the Save button and Export to STL file submenu.



14- Save the file into your diesier folder to send it to your LAB.

