



1. EXTRAORAL MODE

(>30mm): Portrait and profile images (facial photos).

2. INTRAORAL MODE

(5-30mm): Single tooth, quadrant, arch, or smile images. THIS MODE WILL BE USED MOST!!!

3. BLUE LINE MODE

(5mm): Use with autoclavable Intraoral Tip (black cap), which is a 5mm fulcrum, and place directly on tooth surface.



4. MACRO MODE

(<5mm): Used to magnify image 115x. Place camera lens directly on tooth surface. Do not use autoclavable black cap with this mode.

TWO BLUE FLORESCENT MODES

I = Diagnostic Mode: Use for caries detection with modes #3 (with black cap) or #4 (no black cap).

II = Treatment Mode: Use for open prep images with modes #3 (with black cap) or #4 (no black cap). Treatment mode will highlight the decayed dentin more dramatically, acting like a caries dye without the dye.



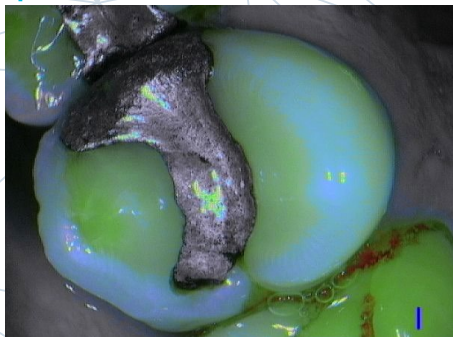
DIAGNOSTIC MODE

TREATMENT MODE

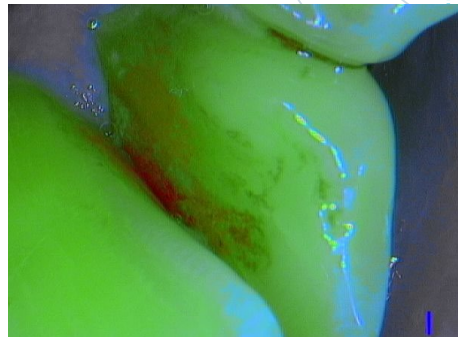
GREEN OR BLUE = HEALTHY DENTIN/ENAMEL
RED = CARIES

DIAGNOSTIC MODE

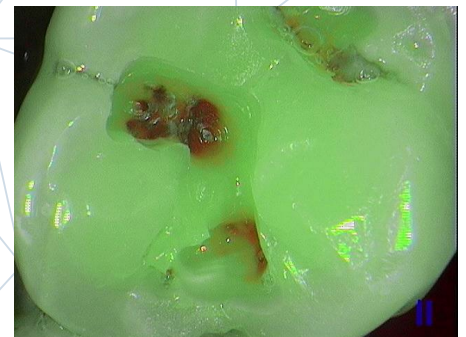
TREATMENT MODE



INTERPROXIMAL DECAY
OCCLUSAL VIEW



INTERPROXIMAL DECAY
LOWER ANTERIOR,
LINGUAL VIEW



OPEN PREP
EXCAVATION

REFERENCES:

Intraoral Tip: 990135

SOPRO Sheaths: 403017

ACTEON Customer Service: 800-289-6367

ACTEON Technical Support: 877-4ACTEON